



# DEFENSE ACCESS ROAD



**PRE-SOLICITATION INDUSTRY DAY**



# DEFENSE ACCESS ROAD



2



Bill Eshbaugh, PE

Project Manager, Eastern Federal Lands Highway Division (EFLHD)

Started with EFLHD in 2000 as an intern/co-op

Held Multiple positions within EFLHD

Project Manager Since 2016

As the PM for the DAR project, Bill is the main Point of Contact for the EFLHD's delivery of the DAR portion of the ANC Southern Expansion. This includes managing the overall DAR design services through EFLHD's consultant, Kimley-Horn; partnering with USACE and ANC in the completion of NEPA and coordination with the Southern Expansion; and overseeing the contract acquisition and construction of the project.

**PRE-SOLICITATION INDUSTRY DAY**



# DEFENSE ACCESS ROAD



3

## Key Stakeholders

Contract Administrator



PRE-SOLICITATION INDUSTRY DAY



# DEFENSE ACCESS ROAD



To achieve the vision of the Arlington National Cemetery Southern Expansion (ANCSE), this project will:

- Realign Columbia Pike
- Modify the S. Joyce Street Intersection
- Modify the Columbia Pike/Washington Boulevard (Route 27) Interchange
- Replace Southgate Road with a new segment of S. Nash Street
- Prepare a new location for the Cemetery operations complex to be added to the south of Columbia Pike
- Extensive other site preparation for the ANC Southern Expansion

Improve multimodal capacity and safety by:

- Adding a dedicated cycle track along Columbia Pike
- Improved pedestrian facilities
- Added street lighting and landscaping

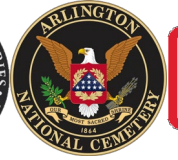


\*For illustrative use only

\*Not a construction plan or contract document.



# DEFENSE ACCESS ROAD



## DAR Project Overview



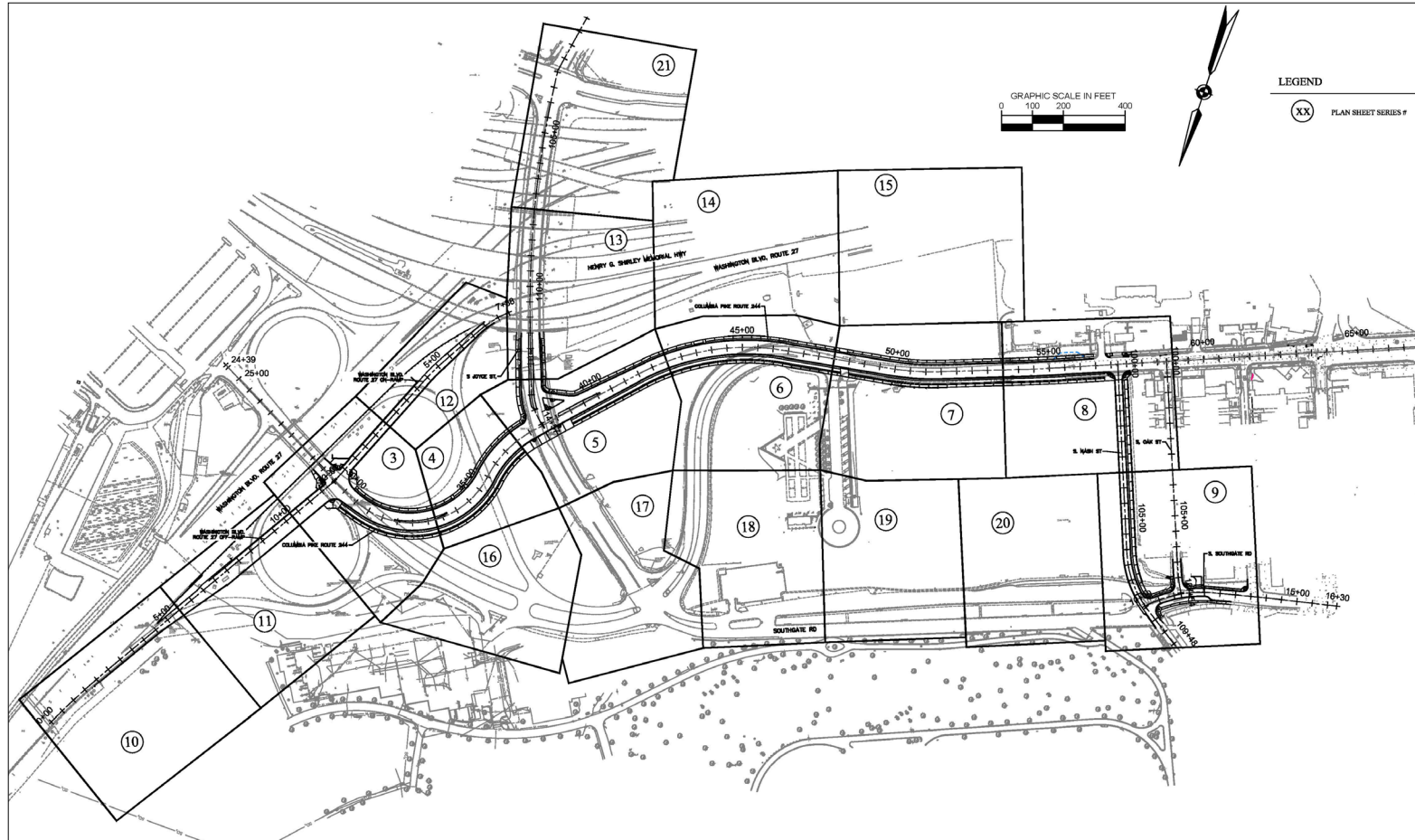
\*For illustrative use only

\*Not a construction plan or contract document.

**PRE-SOLICITATION INDUSTRY DAY**



# DEFENSE ACCESS ROAD



## Roadway Realignment/Reconstruction/Construction

Road Name	Station
Columbia Pike	28+76 to 57+67 (0.55 miles)
Washington Blvd (Route 27) On-Ramp	0+00 to 7+50 (0.14 miles)
Washington Blvd (Route 27) Off-Ramp	2+04 to 12+03 (0.19 miles)
South Joyce Street	111+50 to 114+56 (0.06 miles)
South Nash Street	100+00 to 108+73 (0.17 miles)
Southgate Ave	10+00 to 13+61 (0.07 miles)
Oak St	106+62 – 107+54 (0.02 miles)
Total Roadway Length	1.17 miles

\*For illustrative use only

\*Not a construction plan or contract document.

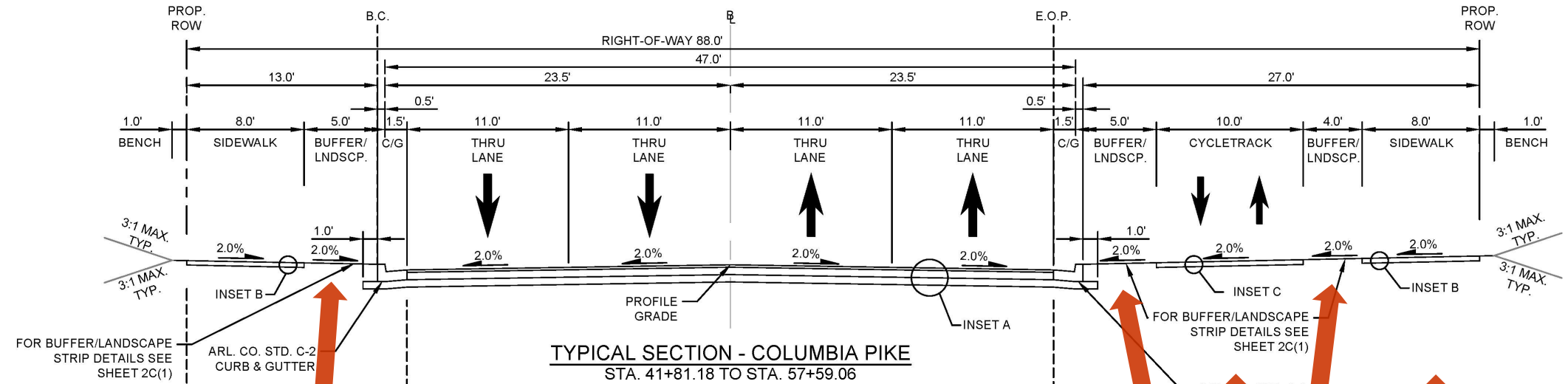
**PRE-SOLICITATION INDUSTRY DAY**



# DEFENSE ACCESS ROAD



7



SideWalk

Buffer/Landscape Strip

Travel/Bus Lanes

Cycle Track

Buffer/Landscape Strip

SideWalk

\*For illustrative use only

\*Not a construction plan or contract document.

PRE-SOLICITATION INDUSTRY DAY



# DEFENSE ACCESS ROAD



## MAINTAINING ROADWAYS AND TRAFFIC DURING CONSTRUCTION

Project requires safe, multimodal traffic accommodation during all phases of Construction:

- Maintain traffic corridor on temporary or permanent roadways between Oak St and Washington Blvd
- Maintain access to Joint Base Myers Henderson Hall, S. Joyce Street and Washington Blvd
- Allow continuous bus, pedestrian and bicycle traffic through work zones
- Install and maintain traffic control devices in accordance with the MUTCD and VAWAPM
- Establish and maintain public communication of work activities and procedures for notification to gov't
- Coordinate with Air Force District Washington and provide access to the Air Force Memorial to the maximum extent practicable.



\*For illustrative use only

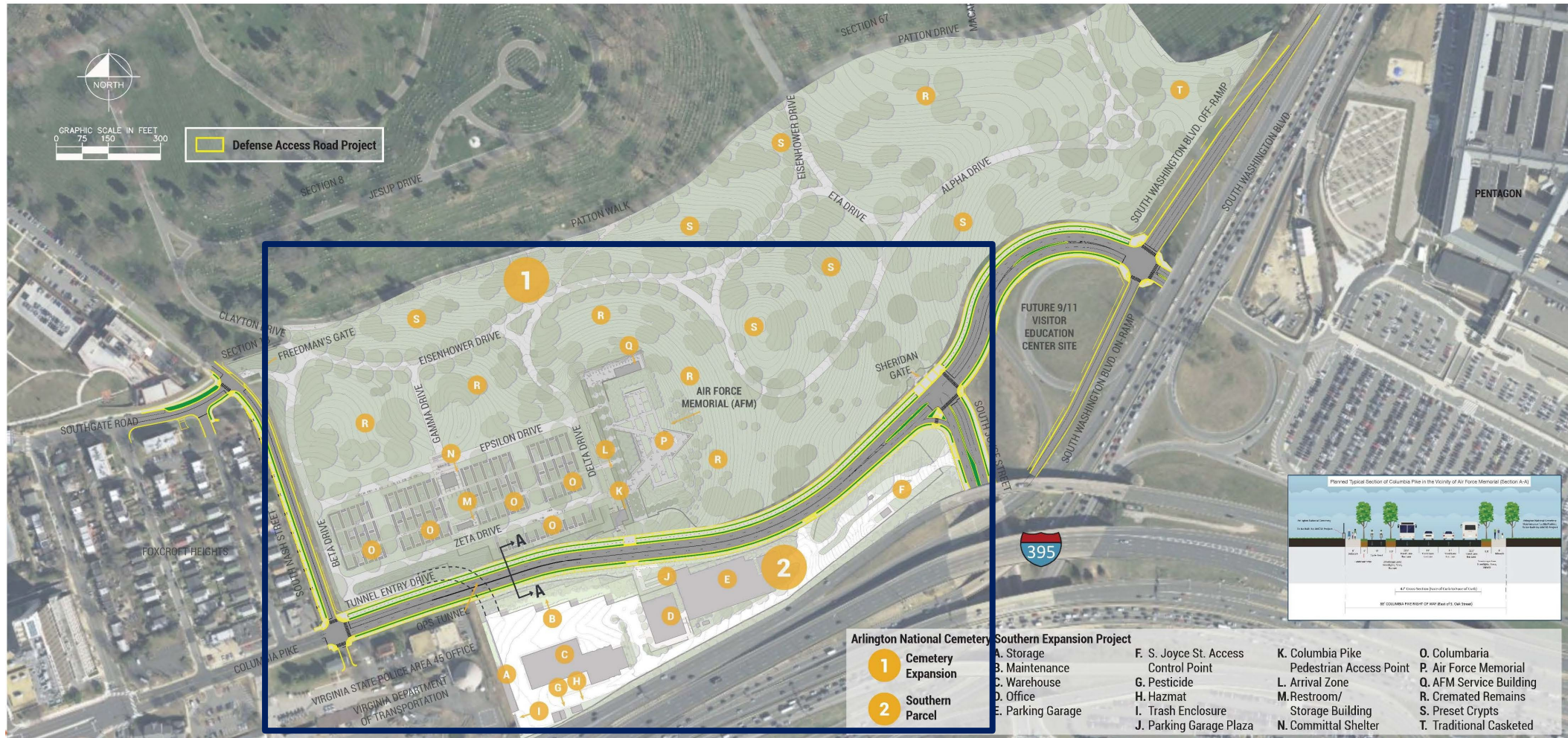
\*Not a construction plan or contract document.

**PRE-SOLICITATION INDUSTRY DAY**



# DEFENSE ACCESS ROAD

## DAR Project → ANC Southern Expansion



\*For illustrative use only

\*Not a construction plan or contract document.

**PRE-SOLICITATION INDUSTRY DAY**



# DEFENSE ACCESS ROAD



\*For illustrative use only  
\*Not a construction plan or contract document.

**PRE-SOLICITATION INDUSTRY DAY**



# DEFENSE ACCESS ROAD



## COORDINATION WITH ANCSE PROJECT

- Partnering encouraged
- Overlapping activities and site use must be coordinated for the project to be successful
- Construction of Arlington National Cemetery Southern Expansion (ANCSE) will begin in early 2023 or sooner
- DAR project's contractor will be required to coordinate schedule and activities with ANCSE contractor:
  - Tunnel and Retaining Walls construction support the ANCSE project
  - South Parcel, site of new operations complex will be among the first areas required to be completed and turned over to ANCSE contractor
  - Three of the five retaining walls should be completed for South Parcel turnover, the remaining two and tunnel completed for cemetery expansion north of Columbia Pike
- Contract solicitation will provide further details on requirements



\*For illustrative use only

\*Not a construction plan or contract document.

**PRE-SOLICITATION INDUSTRY DAY**



# DEFENSE ACCESS ROAD



## SPECIALTY WORK

- Retaining Wall Construction
  - Requires contractor design and construction of two soldier pile walls for Washington Blvd ramps
  - Includes five additional retaining walls for ANCSE
- Tunnel under Columbia Pike
- Design support of excavation
- Settlement monitoring during wall construction
- Mass grading/site preparation
- Traffic signal installation
- Storm sewer installation
- Landscape/Tree planting
- Utilities relocation
  - Coordination with utility owners
  - Installation of private utility pathways/ductbanks



\*For illustrative use only

\*Not a construction plan or contract document.

**PRE-SOLICITATION INDUSTRY DAY**



# DEFENSE ACCESS ROAD

## UTILITY COORDINATION

- Around 30 different utilities exist around and within the project area
  - Arlington County
    - Water, sanitary sewer, power and fiber
  - VDOT
    - Power and fiber
  - Washington Aqueduct
  - Washington Gas
  - Dominion Energy
  - Verizon
  - Comcast
  - USAF 844 Communications
  - Transurban (I-395 Tolling) Communications
  - Additional Private Communications
- Contractor will direct the relocation in coordination with the construction phasing to ensure connectivity throughout construction
- Contract will identify work to be performed by contractor or utility owner.

\*For illustrative use only

\*Not a construction plan or contract document.

**PRE-SOLICITATION INDUSTRY DAY**





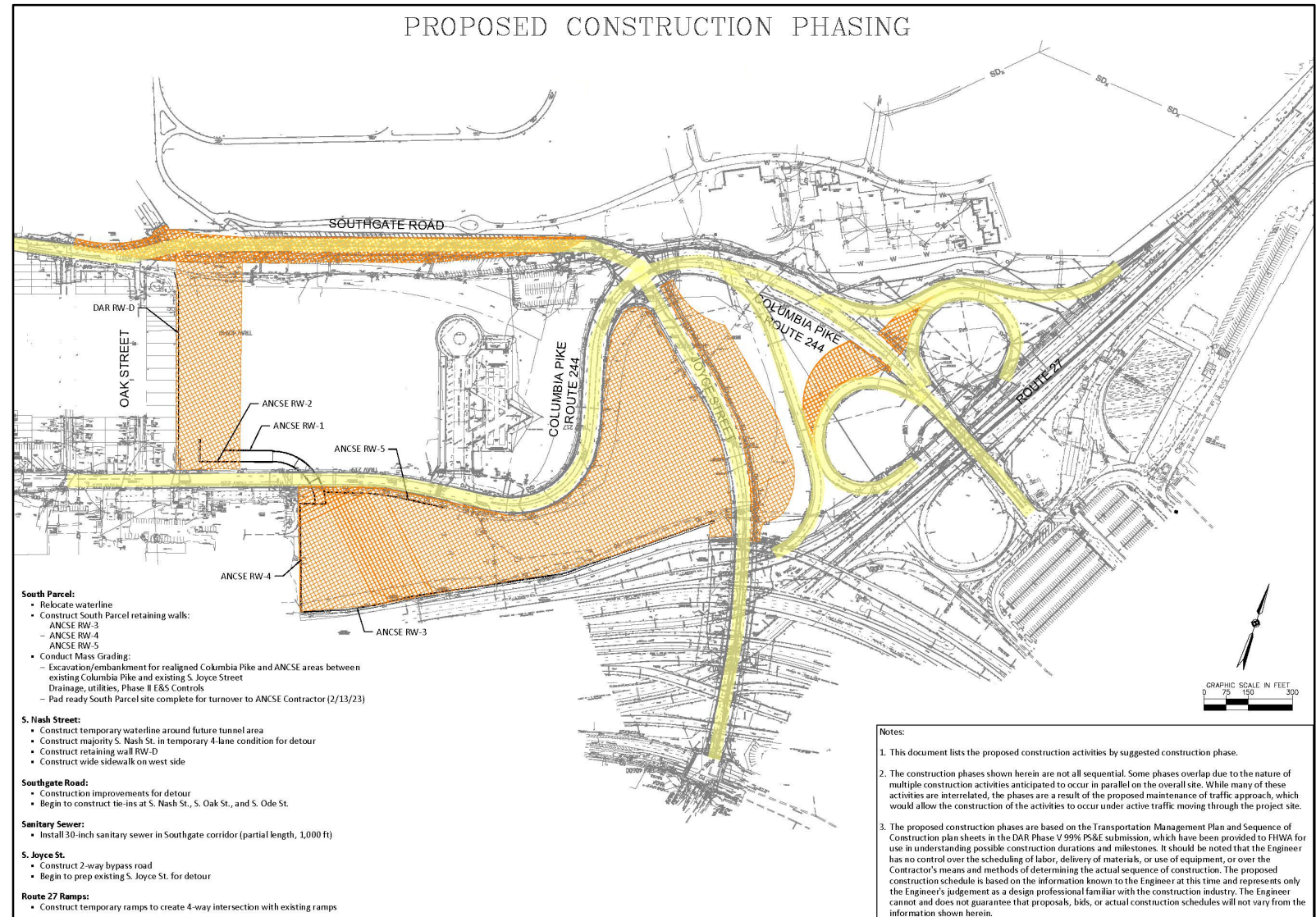
# DEFENSE ACCESS ROAD



## CONSTRUCTION PHASING PLAN

### Early Phasing

- Work on walls and grading in the South Parcel
- Concurrently, construct Nash St. to allow closure of Columbia Pike.
- Construct back entrance to Air Force Memorial
- Temporarily Relocate some utilities



\*For illustrative use only

\*Not a construction plan or contract document.

PRE-SOLICITATION INDUSTRY DAY



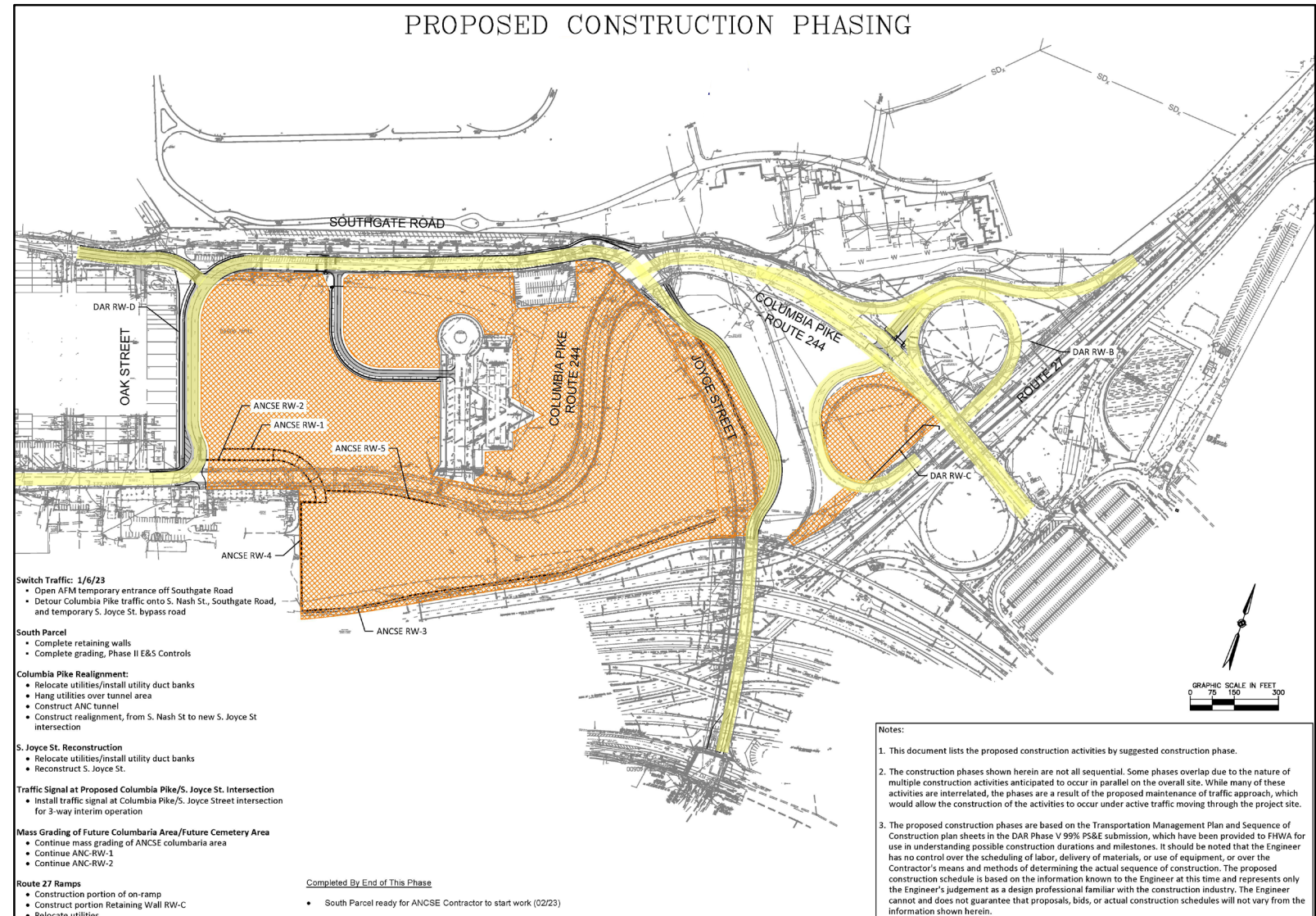
# DEFENSE ACCESS ROAD



## CONSTRUCTION PHASING PLAN

### Midway Phasing #1

- Continue work on walls and grading in the South Parcel
- Begin mass grading north of Columbia Pike and west of AFM
- Construct back entrance to Air Force Memorial
- Temporarily Relocate some utilities



\*For illustrative use only

\*Not a construction plan or contract document.

PRE-SOLICITATION INDUSTRY DAY



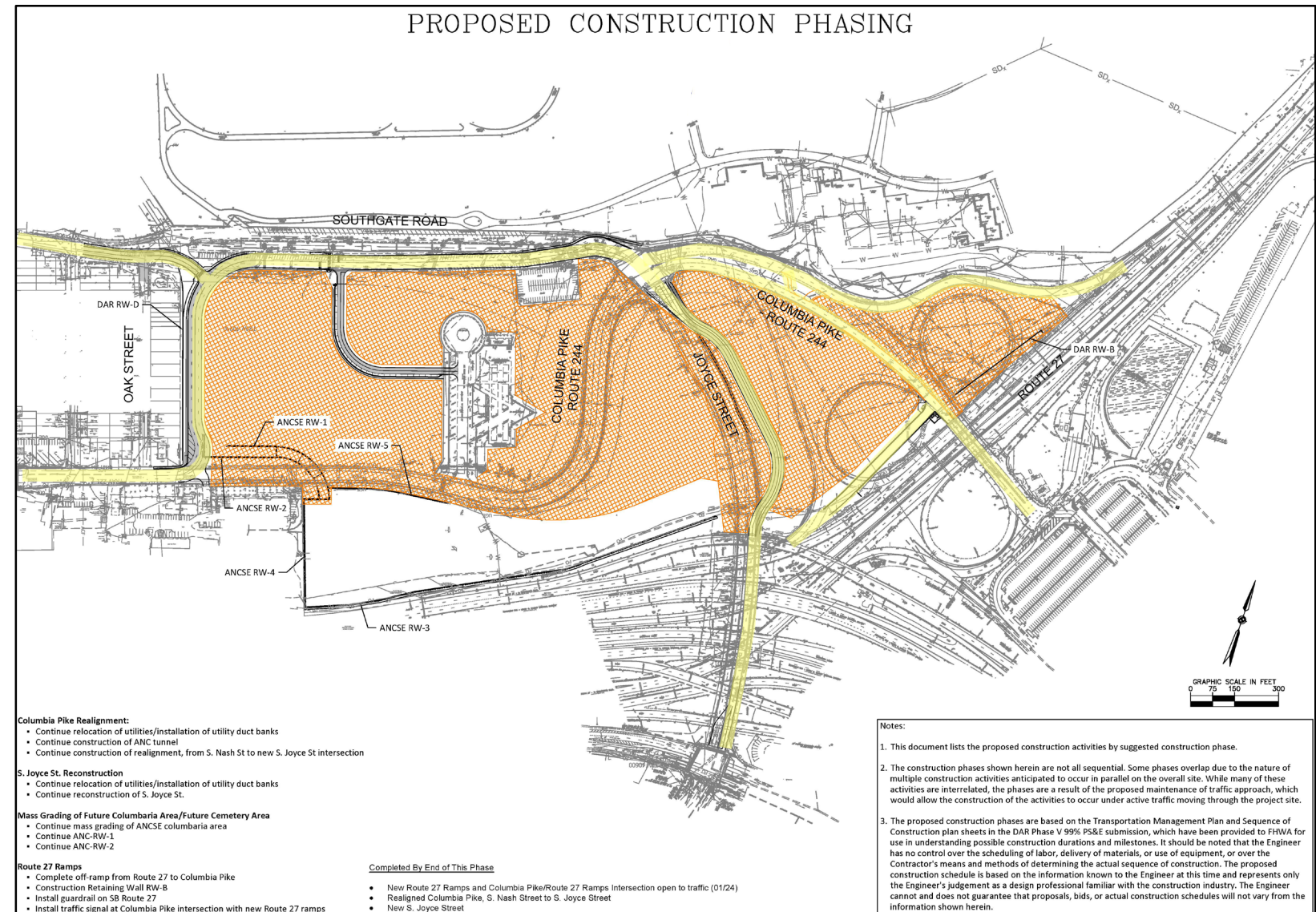
# DEFENSE ACCESS ROAD



## CONSTRUCTION PHASING PLAN

### Midway Phasing # 2

- South Parcel substantially complete and turned over
- Work on Washington Blvd ramps continues
- Install new utilities ductbanks along Columbia Pike corridor
- Continue construction of tunnel under Columbia Pike



\*For illustrative use only

\*Not a construction plan or contract document.

**PRE-SOLICITATION INDUSTRY DAY**



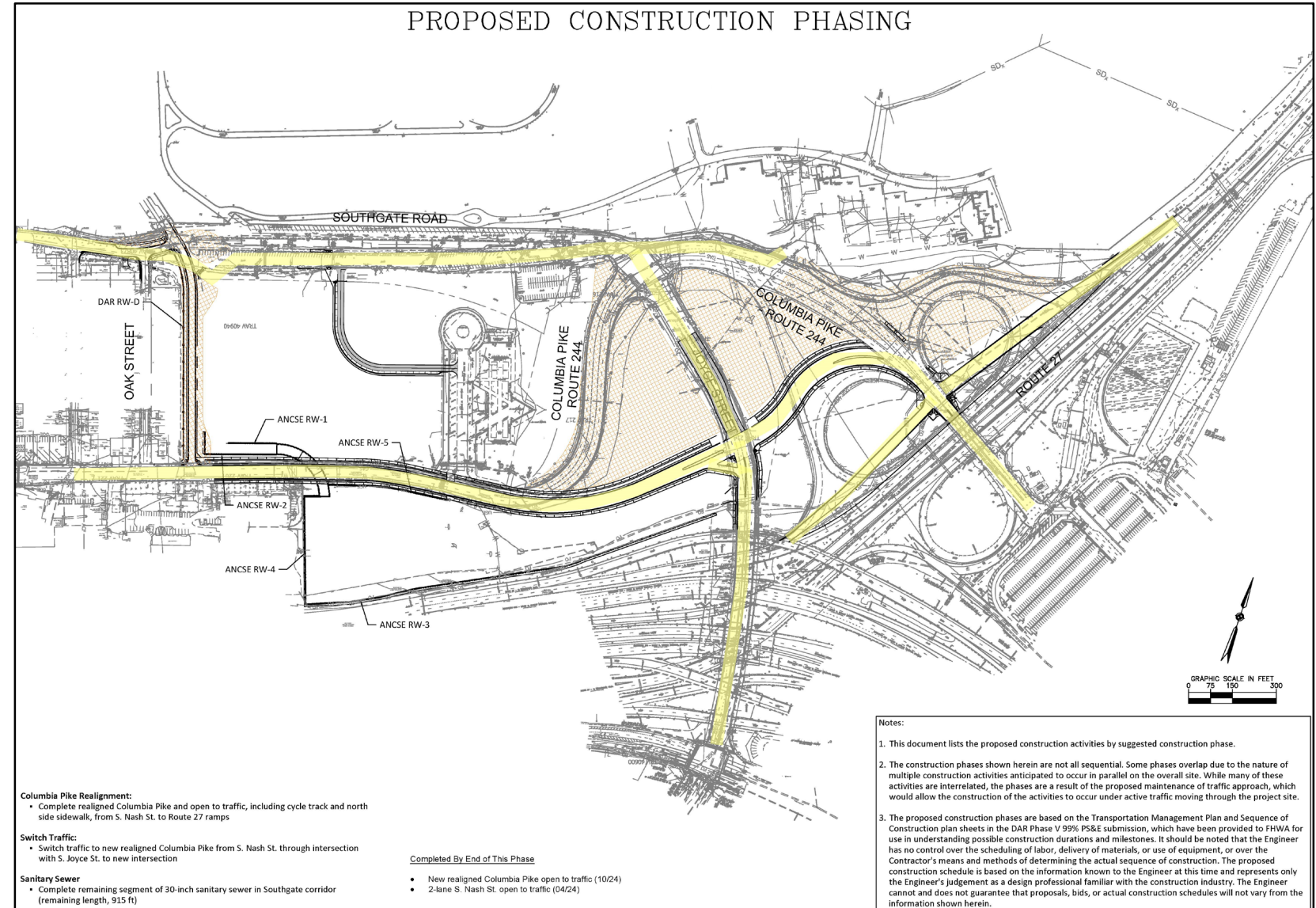
# DEFENSE ACCESS ROAD



## CONSTRUCTION PHASING PLAN

### Final Stages

- Nash St in final two-lane configuration; complete tunnel retaining walls
- Columbia Pike open to traffic
- Access along Southgate remains to the old operations complex
- Demo roadways and complete grading



\*For illustrative use only

\*Not a construction plan or contract document.

**PRE-SOLICITATION INDUSTRY DAY**



# DEFENSE ACCESS ROAD



## SOLICITATION AND CONTRACT

- Government anticipates awarding a Contract to a Best Value Contractor through a one-step RFP
  - Requires offeror to submit qualifications in support of multiple rating factors along with price proposal
  - The factors, when combined, may be weighted approximately equal to cost or price
- Fixed solicitation schedule
  - Pre-Solicitation (approximately 2 weeks)
  - Solicitation (approx. 6 weeks)
  - Award (approx. 1 month following proposal due date)
  - Notice to proceed (approx. 3 weeks following award)
- Project construction timeline
  - Begin Summer 2021
  - End Spring 2025



\*For illustrative use only

\*Not a construction plan or contract document.



# DEFENSE ACCESS ROAD



## PROJECT RENDERINGS (ILLUSTRATIVE PURPOSES ONLY)

\*For illustrative use only

\*Not a construction plan or contract document.

**PRE-SOLICITATION INDUSTRY DAY**



VIEW NORTHWEST



COLUMBIA PIKE EXISTING - LOOKING WEST



COLUMBIA PIKE - SHARED-USE PATH LOOKING WEST



COLUMBIA PIKE EXISTING - LOOKING EAST



COLUMBIA PIKE – LOOKING EAST



# QUESTIONS / DISCUSSIONS

For more information, reach out to: [william.eshbaugh@dot.gov](mailto:william.eshbaugh@dot.gov)

Or visit:

<https://highways.dot.gov/federal-lands/projects/va/st-anc-1>